

Cephalothorax more long than broad, finely punctuated and clothed with short clavate hairs. Both transverse furrow very distinct, the first curved, convexity forwards, with a distinct angle in the middle, the second nearly straight with an angle in the central region.

Eyes none.

All but the last of the dorsal segments divided by a broad length-furrow, finely granulated; the back-edges with short clavate to simple hairs.

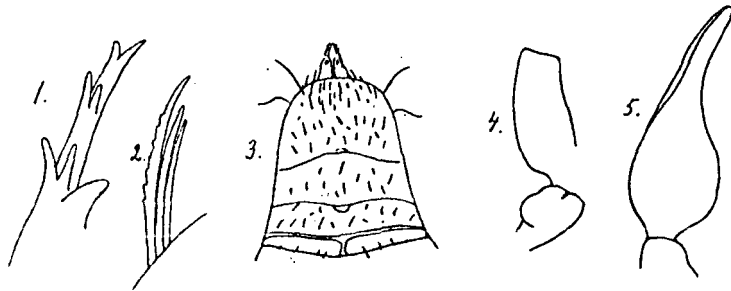


Fig. 2. *Chelifer patagonicus* n. sp. — 1 galea, 2 flagellum, 3 cephalothorax, 4 trochanter and femur, 5 chela.

Cheliceres small. Galea pretty long, at the head divided in two short tecti, in the central part and nearly the foot further two pair of teeth. Flagellum consists of three setae, the first one a little broader than the others with very short teeth in the fore-edge. The two posterior setae entire.

Pedipalpi a little longer than the body. Coxa finely granulated, thinly clothed with pretty short, sawn hairs, of which those on the prolongation are very long and entire. Trochanter strongly granulated, on the outside strongly tuberoso. The outer contour of femur convex, the inner to begin with convex (a little more) then nearly concave at the head. Tibia slightly shorter than femur, on both sides convex (a little more on the inside). Manus on both sides very convex; digiti slightly curved, as long as manus. All joints finely reticulately granulated, clothed with short simple — toothed hairs.

Measurements of the joints of pedipalpi.

	II	III	IV	Va	Vb
Length	0,39 mm.	0,78 mm.	0,72 mm.	0,62 mm.	0,62 mm.
Breadth.....	0,24 »	0,27 »	0,31 »	0,45 »	

The legs densely clothed with simple — toothed hairs. Claws unarmed.

Length of the body c. 2,73 mm.

This species is collected this year by Mr. ERLAND NORDENSKIÖLD B. A. in the southwest of Patagonia: Ultima Esperanza (3 sp.), MAYER (8 sp.) and between MAYER and Puerto Consuelo. All specimens are found among leaves in beech-woods.



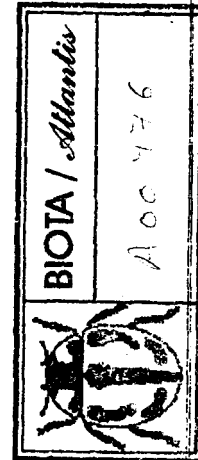
CHELONETHI (PSEUDOSCORPIONS) FROM THE CANARY AND THE BALEARIC ISLANDS.

By ALBERT TULLGREN.

Garypus canariensis n. sp.

The body a little brilliant. Cephalothorax light olive-brown. The two first dorsal segments with three dark red-brown spots, the others — without the last, which is one-coloured with a darker colorisation and every one with one or two dark red-brown spots. The spots of the outer row pretty indistinct. Pedipalpi and cheliceres light olive-brown (very lighter than the cephalothorax). The ventral side of the body yellow; most segments designed as those of the dorsal side.

Cephalothorax behind the eyes broader than long, a little tapering forwards, finely granulated, with a pretty broad and deep forwards curved depression, situated much nearer the eyes than the back-edge of cephalothorax. Nearly the back-edge a very



indistinct furrow. Cephalothorax before the eyes very tapering, about as long as the breadth at the basis, forwards more granulated than otherwise and with a longitudinal furrow, which reaches nearly to the eyes.

Eyes two pair, very distinct, the first one is greatest, situated on a little protuberance about in the middle of the side of the cephalothorax.

Dorsal segments (without the last) divided of a length-furrow, finely granulated, in the back-edge with in rows arranged, very short, simple hairs, which backwards are very little increased in length.

Galea very short, in the top — as far as I am able to see — divided in numerous branches.

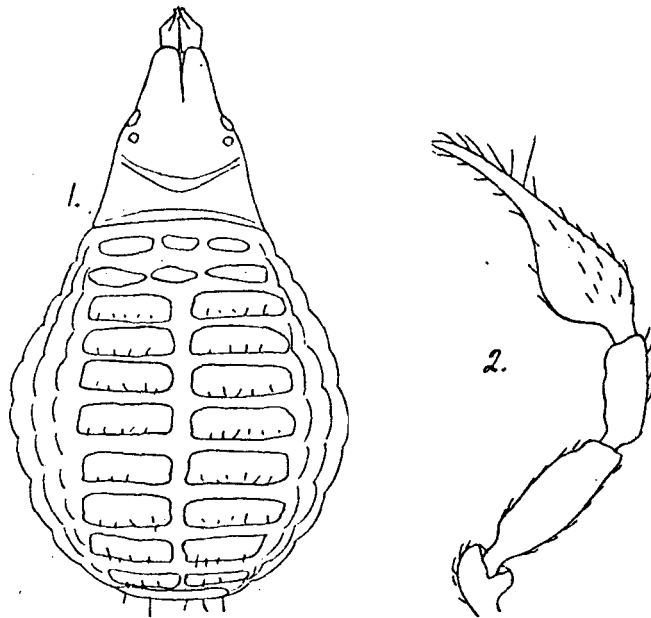


Fig. 3. *Garypus canariensis* n. sp. — 2 pedipalpus.

Pedipalpi narrow, longer than the body. Coxa a little brilliant, finely granulated and in the fore-edge with some very long hairs and a few short ones. The outer coxite nearly thrice as long as the inner one, smaller convex than this, on the outside at

least with short, simple hairs. Femur about thrice longer than broad, distinctly pedicellated, the outer contour very little convex, the inner nearly straight, forwards bent to the axis of the joint; on the two sides thinly clothed with simple, short hairs. Tibia shorter, about twice longer than broad, the outer contour a little convex, the inner also, more in the middle; the outside with short hairs. Manus about twice as broad as tibia, most convex at the bottom of the inside and with short hairs. Digits a little curved, some longer than manus, in the top with long hairs. — All joints strongly granulated.

Measurements of the joints of the pedipalpi.

	II	III	IV	Va	Vb
Length	0,16 mm.	0,45 mm.	0,27 mm.	0,34 mm.	0,37 mm.
Breadth	0,13 "	0,14 "	0,12 "	0,22 "	

The legs strongly granulated, clothed with simple hairs. Claws unarmed.

Length of the body 1,63 mm.

During my journey on Tenerife in the summer 1896 I found this interesting species in one specimen from under humid moss close by a little rivulet in Barranco de Ruiz (18⁵/1896).

Obisium carcinoides HERM. 1804.

One specimen from Ibiza, San Antonio (18⁵/1270) collected by A. LINDAHL and belonging to the Zoological Museum of the R. University at Upsala.

Measurements of the joints of the pedipalpi.

	II	III	IV	Va	Vb
Length	0,29 mm.	1,56 mm.	1,05 mm.	1,05 mm.	1,32 mm.
Breadth	0,3 "	0,39 "	0,47 "	0,74 "	

Length of the cephalothorax 0,98 mm.

Breadth » » » 1,15 »

Length » » body 4 »