

## New records of Chalcidoidea (Hymenoptera) from the Canary Islands

M. Báez & R. R. Askew

### SUMMARY

In this paper we add 87 species of Chalcidoidea (Hymenoptera) to the faunal list of the Canary Islands, bringing the total number of recorded species to 228. Details of recent captures of some previously recorded species are also included and two new species, *Mesopolobus bonessi* sp. n. (Pteromalidae) and *Neochrysocharis violacea* sp. n. (Eulophidae), are described.

**Key words:** Hymenoptera, Chalcidoidea, Canary Islands

### RESUMEN

En el presente artículo se amplía la lista conocida de la superfamilia Chalcidoidea (Hymenoptera) en las Islas Canarias en 87 especies, alcanzando así este grupo un total de 228 especies. Se proporciona también información sobre las capturas de aquellas especies ya previamente conocidas en el archipiélago, y se describen dos nuevas especies: *Mesopolobus bonessi* n. sp. y *Neochrysocharis violacea* n. sp.

**Palabras clave:** Hymenoptera, Chalcidoidea, Islas Canarias

### INTRODUCTION

Hymenoptera Chalcidoidea is a poorly known group in the fauna of the Canary Islands. Following GARCIA MERCET's (1923) paper, relatively few authors have dealt with chalcids in the archipelago: OTTEN (1940), AROZARENA (1966a, 1966b, 1978), BOUCEK (1951, 1972), HEDQVIST (1969, 1974, 1977, 1978, 1979, 1983), GIJSWIJT (1984, 1990), GIJSWIJT & GRAHAM (1986), GRAHAM (1991) and GRISSELL (1979) have together recorded a total of 141 species of Chalcidoidea.

Study of material now available to the authors allows us to add a further 87 species for the archipelago (marked with an asterisk in the following list): 4 species of Chalcididae, 4 Eurytomidae, 5 Torymidae, 1 Agaonidae, 1 Ormyridae, 2 Perilampidae, 24 Pteromalidae, 7

Eupelmidae. 8 Encyrtidae. 24 Eulophidae, 1 Tetracampidae, 2 Aphelinidae, 1 Signiphoridae, 2 Tnchogranimatidae and 1 Mymaridae. One species of Pteromalidae and one species of Eulophidae are described as new. Ormyridae, Perilaniptidae and Signiphoridae are recorded for the first time. The material is mostly deposited in the authors' collection.

Several species have not yet been confidently or fully identified, and these are indicated by a query, assignment to genus only or proximity to an allied form which may or may not be conspecific. Unless indicated to the contrary, all listed material was collected by M. Báez. Genera and species are arranged alphabetically within families or subfamilies.

### Chalcididae

\**Brachymeria* sp. nr *inermis* (Fonscolombe, 1840)

Tenerife: (*sine locus*), emerged 25.xi. 1989 ex Lepidoptera pupa (indet.) collected xi.1989, 1 ♀ (Gregory, J.L.).

The base of the hind tibia is reddish, but the specimen otherwise resembles *inermis*. However, *B. inermis* is a well-known parasitoid of *Cassida* (Coleoptera).

*Brachymeria minuta* (Linnaeus, 1767)

Tenerife: La Tejita, 9.iv. 1986. 3♂♂.

*Hockerin bifasciata* Walker, 1834 f. *erdoesi* (Boucek, 1951)

Tenerife: Las Cañadas. Malaise trap, 1996, 6♂♂ 4♀♀ (Arechevaleta, M., Camacho, A., Oromi, P., Zurita, N.).

La Gomera: (*sine locus*), emerged 19.v. 1984 ex Tortricidae (Lepidoptera) pupa collected iv.1984 on *Astragalus*, 1♀ (Simpson, A.N.B.).

\**Hockeria ?susterai* (Boucek, 1951)

Tenerife: Las Cañadas, Malaise trap. 1996, 1♂ (Oromi, P.)

*Hockerin unicolor* Walker, 1834.

Tenerife: Las Cañadas, Malaise trap, 1996, 166♂♂ 4♀♀ (Camacho, A., Oromi, P., Zurita, N.).

La Palma: Volcán Martín. 19-23.viii. 1986, 1♂ (Ashmole, P.), BOUCEK (1951: 69) mentions specimens from Tenerife that are perhaps of this species but which 'are shinier than the Central European specimens and the pubescence is snowy white.'

\**Proconura aeneonitens* (Graham, 1983)

Tenerife: Punta del Hidalgo, 29.ix. 1985, 1♀; Las Cañadas, Malaise trap, 1996, 36♂♂ 5♀♀ (Camacho, A., Oromi, P., Zurita, N.).

*Proconura nigripes* (Fonscolombe, 1832)

Tenerife, Las Cañadas. Malaise trap. 1996, 1♂ (Oromi, P.).

\**Psilochalcis subarmata* (Forster, 1859)

Tenerife: Las Cañadas. 8.vi. 1986. 1♂.

### Eurytomidae

\**Eurytoma* sp. nr *robusta* Mayr. 1878

Tenerife: Barranco de San Andrés, 16.i. 1977. 1♀.

La Palma: nr El Charco, 28.v. 1976, 1♀ (Chandler, P.J.).

\**Eurytoma timaspidis* Mayr, 1878  
Gran Canaria: Marzagán, 17.ii. 1985, 1 ♀.

\**Systole* sp.  
Tenerife: Las Cañadas, Malaise trap, 29.vi. 1996, 1 ♂ (Oromi, P.).

\**Tetramesa* sp.  
Tenerife: Barranco de San Andrés, 9.iii. 1985, 1 ♂.

### Torymidae

\**Idiomacromerus nitens* (Boucek, 1982)  
Fuerteventura: La Matilla, 26.ii. 1990, 1 ♀.

*Megastigmus transvaalensis* (Hussey, 1956)  
Tenerife: La Cuesta, 24.v. 1974, 1 ♂.  
Lanzarote: Nazaret, 23.ii. 1979, 1 ♂.

*M. transvaalensis* is reported from the Canary Islands by GRISSELL (1979) and HABECK, BENNETT & GRISSELL (1989). It is phytophagous in seeds of *Schinus*.

\**Monodontomerus ?strobili* Mayr, 1874

Tenerife: Las Cañadas, Malaise trap, 1996, 1 ♀ (Camacho, A.). The identity is queried because of the similarity of *M. strobili* to *M. canariensis* Hedqvist, 1979, the latter being described from La Palma as a parasitoid of larvae of *Calliteara fortunata* (Rogenhofer, 1891) (*Lepidoptern, Lymantriidae*). *M. strobili* is a primary or secondary parasitoid in moth and sawfly cocoons on coniferous trees. The specimen from Tenerife conforms best to *M. strobili* in having the ovipositor only 1.2 times gaster length, scutellar frenum finely but entirely reticulate, and the first gastral tergite with faint alutaceous sculpture.

\**Podagrionella ?lichtensteini* (Picard, 1933)

Tenerife: Las Cañadas, Malaise trap, 1996, 4 ♂ ♂ 2 ♀ ♀ (Camacho, A., Oromi, P.).

The ovipositor is slightly longer than in females from the Iberian Peninsula, and there are also small differences in the shape of the metafemora.

\**Pseudotorymus* sp. 1

La Palma: Fuencaliente, 13.xii. 1985, 1 ♀ (Rafael, G.B.).

\**Pseudotorymus* sp. 2

Tenerife: Bajamar, 27.iii. 1984, 1 ♂.

[Note: PÉREZ (1895) describes *Callimome* (= *Torymus*) *femoralis* from Tenerife; HEDQVIST (1977) considers it to be probably a *Pseudotorymus* but GRISSELL (1995) retains it in *Torymus*.]

*Torymoides kiesenwetteri* (Mayr, 1874).

Tenerife: Barranco de Ruiz. 19.iv. 1989, 1 ♂ ; Almaciga, 15.vii. 1986, 1 ♀.  
La Gomera: Vallehermoso. 19.ix. 1977. 1 ♂.  
Fuerteventura: La Matilla. 26.ii. 1990, 1 ♀.  
La Palma: Barlovento. 19.v. 1983, 1 ♀.  
Lanzarote: El Tablero, 21.iii. 1985, 1 ♀ ; Orzola. 22.iii. 1985, 1 ♂ 1 ♀ ; Pleitito, 30.iii 3.iv. 1985, 3 ♂ ♂ 3 ♀ ♀ (Ashmole, P.).

**Agaonidae**

"Agaonidae sp. indet.

Tenerife: Las Cañadas, Malaise trap. 1996, 1♀ (Camacho, A.).

**Ormyridae**

\**Ormyrus orientalis* (Walker, 1871)

Tenerife: Las Cañadas. Malaise trap, 1996, 1♂ (Oromi, P.).

**Perilampidae**

\**Perilampus* sp. 1

Tenerife: Santa Ursula, 12.ii. 1995, 1♂; Las Cañadas, Malaise trap, 1996, 1♀ (Oromi, P.).

A green species which runs to the genus *Fifirftiz* Argamon, 1990, other species of which are mostly black.

\**Perilampus? intermedia* (Boucek, 1956)

Tenerife: Punta del Hidalgo, 27.iii. 1984, 1♂.

This differs from material of *intermedia* from France only in having a slight metallic sheen.

**Pteromalidae**

## SPALANGIINAE

\**Spalangia fuscipes* (Nees, 1834)

Lanzarote: Pleitito, 30.iii-3.iv. 1985, 1♀ (Ashmole, P.).

## EUNOTINAE

\**Eunotus parvulus* (Masi, 1931)

Tenerife: Las Cañadas, Malaise trap, 1996, 1♂ (Camacho, A.).

*Scutellista cyanea* Motschulsky, 1859

Tenerife: La Laguna. 3.xii. 1985, 1♀ (Rafael, G.B.).

## ASAPHINAE

*Asaphes suspensus* (Nees, 1834)

Tenerife: Monte Aguirre, 11.vi. 1985, 1♀; El Teide snowfield. 30.iii. 1984, 1♀ (Ashmole, P.).

*Asaphes vulgaris* (Walker, 1834)

Tenerife: Barranco de San Andres, 9.iii. 1985, 1♂.

## MISCOGASTERINAE

*Ammeia pulchella* Delucchi, 1962

Tenerife: Puerto de Erjos, 16.x. 1984, 1♀.

- \**Cyrtogaster degener* (Walker, 1872)  
Tenerife: Las Cañadas, 8.vi. 1986, 1 ♂; Vueltas de Taganana, 4.vi. 1985, 1 ♀; Monte de Los Silos, 17.ix. 1985, 1 ♀.
- \**Harrizia mira* (Delucchi, 1962)  
Tenerife: La Laguna, 8.iii. 1983, 1 ♀.
- Halticoptera circulus* (Walker, 1833)  
Gran Canaria: Marzagán, 17.ii. 1985, 1 ♀.
- \**Lamprotatus* sp. nr *picinervis* (Thomson, 1876)  
Fuerteventura: El Cardón, 28.ii. 1990, 1 ♂ 1 ♀; Corralejo, 5.iii. 1984, 1 ♂.
- \**Miscogaster glabricula* (Graham, 1979)  
Tenerife: La Laguna, 9.iii. 1986, 1 ♀; Puerto de Erjos, 16.x. 1984, 1 ♂.
- \**Miscogaster* sp.  
Tenerife: Cumbre de Erjos, 30.iv. 1985, 2 ♀ ♀.
- Plutothrix canariensis* (Hedqvist, 1974)  
Tenerife: Monte de Los Silos, 17.ix. 1985, 1 ♂; Palo Blanco, 27.ix. 1984, 1 ♂; Ijuana, 7.vi. 1985, 1 ♂.
- \**Sphaeripalpus* sp. nr *viridis* (Forster, 1841)  
Lanzarote: Pleitito, 30.iii-3.iv. 1985, 1 ♀ (Ashmole, P.).
- \**Sphégigaster* sp. nr *cuscutae* (Ferrière, 1959)  
Islas Salvajes: Gran Salvaje, ii. 1976, 1 ♀.
- Syntomopus ?incisus* (Thomson, 1878)  
Tenerife: Ijuana, 7.vi. 1985, 3 ♀ ♀.
- Systasis basiflava* (Graham, 1981)  
Gran Canaria: Marzagán, 17.ii. 1985, 2 ♀ ♀.  
Tenerife: Barranco de San Andrés, 9.iii. 1985, 1 ♀; Güimar, banana plantation, 3.iv. 1973, 1 ♀ (Chandler, P.J. & Jackson, C.H.).
- \**Systasis encyrtoides* (Walker, 1834)  
Tenerife: Punta del Hidalgo, 27.iii. 1984, 2 ♂ ♂; Palo Blanco, 27.ix. 1984, 3 ♂ ♂ 1 ♀; Ijuana, 7.vi. 1985, 1 ♀; offshore Neuston Net, 15.iii. 1984, 1 ♂ (Ashmole, P.).
- Systasis ?angustula* (Graham, 1969)  
La Palma: La Galga, 17.v. 1983, 1 ♂ 1 ♀; El Charco, 28.v. 1984, 1 ♀.  
Identification is tentative because of the similarity between *S. encyrtoides* and *S. angustula*. GUISWIJT (1990) records only *S. angustula* from Tenerife.

## PTEROMALINAE

- Catolaccus ater* (Ratzeburg, 1852)  
La Palma: Volcán Martín, 19-23.viii. 1986, 1 ♂ (Ashnole, P.).
- \**Chlorocytus ?spicatus* (Walker, 1835)  
Tenerife: Ijuana, 7.vi. 1985, 1 ♀; Barranco del Río, 9.iv. 1952, 1 ♂ 1 ♀.
- \**Conomorium amplum* (Walker, 1835)  
Tenerife: Almáciga, 15.vii. 1986, 1 ♀; Puerto de Erjos, 16.x. 1984, 1 ♀.

*Conomorium patulum* (Walker, 1835)

Tenerife: Barranco de Ijuana. 4.x. 1984, 1 ♀.

*Dinarmoides spiloferus* (Masi, 1924)

Lanzarote: Pleitito. 30.iii-3.iv. 1985, 2 ♀♀ (Ashmole, P.).

Tenerife: Ijuana. 30.ix. 1989, 1 ♀.

\**Erythromalus* sp.

Tenerife: El Sauzal, 3.vi. 1979, 1 ♀

*Guancheria compressithorax* (Hedqvist, 1978)

Tenerife: Las Cañadas, Malaise trap, 1996, 3 ♀♀ (Zurita, N.).

*Homoporus* sp.

Tenerife: Barranco de San Andrés, 9.iii. 1985, 1 ♂.

*Makaronesa obumbrata* (Walker, 1872)

Tenerife: Las Yedras, 10.ix. 1984, 2 ♂♂, 20.ix. 1984, 1 ♂, 30.x. 1985, 4 ♂♂; Palo Blanco, 27.vi. 1984, 1 ♂, 27.ix. 1984, 2 ♂♂, 27.vi. 1984, 1 ♂; Monte Aguirre, 21.xi. 1976, 1 ♂, 11.vi. 1985, 1 ♂; Monte de Los Silos, 16.x. 1984, 2 ♂♂; Ijuana, 8.xi. 1985, 1 ♂.

La Gomera: Barranquillos, 18.ix. 1977, 1 ♂.

La Palma: Los Tilos, 17.v. 1993, 1 ♂.

Females have apparently not yet been collected on the Canary Islands.

\**Meraporus graminicola* (Walker, 1834)

Tenerife: Cumbre de Erjos, 30.iv. 1985, 1 ♂.

*Mesopolobus adrianae* (Gijswijt, 1990)

Tenerife: Punta del Hidalgo, 27.iii. 1984, 2 ♂♂, 27.ix. 1986, 1 ♂ 1 ♀; La Tejita, 9.iv. 1986, 1 ♂; Monte de Los Silos, 17.ix. 1985, 1 ♂ 1 ♀; Santa Ursula, 1.vii. 1979, 1 ♂.

Gran Canaria: Hoya del Gamonal, 14.vii. 1981, 1 ♂ 1 ♀ (Suarez, C.).

\**Mesopolobus aequus* (Walker, 1834)

Tenerife: Genovés, 15.ii. 1985, 1 ♀.

*Mesopolobius maculipennis* (Mercet, 1923)

Fuerteventura: Tarajalejo, ex Cecidomyiidae (Diptera) galls on ?*Zygophyllum fontanesi* collected 2.iv. 1987, 108 ♂ 199 ♀ (Boness, M.).

Reponed by ASKEW (1994) under the synonym *M. blascoi* Askew, 1994.

*Mesopolobus bonessi* Askew sp. n.

Female. Greenish blue: scape, pedicel and claval segments 2 & 3 yellow, rest of flagellum brownish yellow; legs yellow with last tarsal segments brown and only coxae (except their apices) metallic. Forewing (fig. 2) with a transverse fuscous fascia descending from the parastigma, veins pale, the stigmal vein almost unpigmented. Length 0.9-1.0mm.

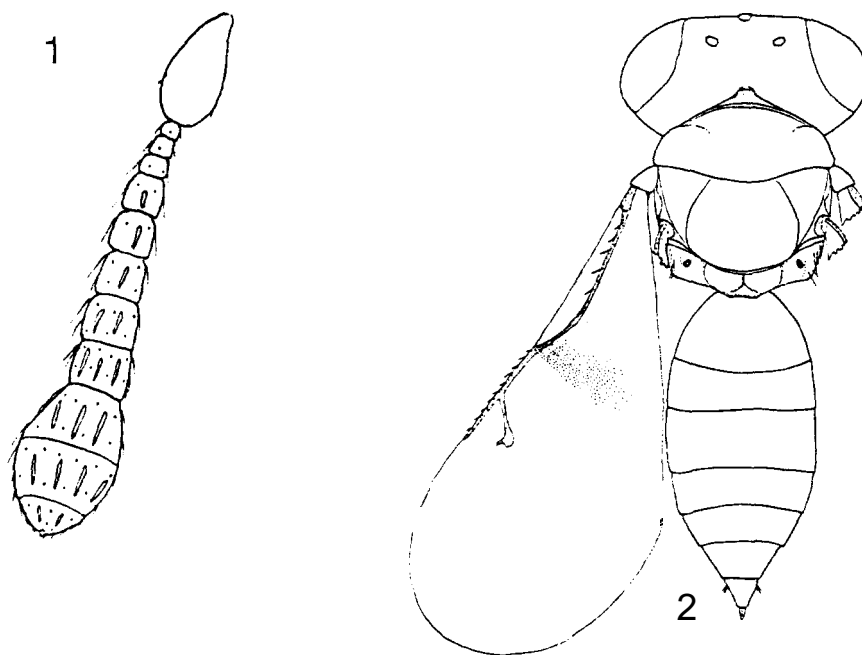
Head in dorsal view very broad. 2.1 times as broad as long and 1.3 times as broad as mesoscutum; temples very short. Head in facial view 1.25 times as broad as high; clypeus with radiating striae, anterior margin entire; frons rather weakly reticulate in upper half. but quite strongly reticulate and dull between lower eye and mouth: toruli distinctly below lower ocular line, their lower margins very much closer to anterior margin of clypeus than to median ocellus (4:11). Mouth opening about twice as wide as malar space. Antenna with scape reaching to only 2.5 diameters of median ocellus, not quite 0.9 times

height of eye: length of pedicel plus flagellum (fig. 1) only 0.7 times breadth of head; pedicel in dorsal view twice as long as broad, slightly broader than funicle segment 5; flagellum with 3 anelli and 5 funicle segments, strongly clavate, first funicle subquadrate, the rest increasingly transverse; clava (collapsed) ovoid, about 1.3 times as long as broad and twice as broad as fifth funicle: funicles with few sensillae arranged in a single transverse row on each segment.

Mesosoma in dorsal view almost as broad as long (fig. 2). Pronotal collar finely carinate, very narrow medially where about 0.14 times as long as mesoscutum. Mesoscutum more than twice as broad as long, without punctures. Scutellum transverse, slightly longer than mesoscutum. Propodeum hardly one third of length of scutellum, median area smooth and shining with a very short median carina which runs posteriorly into a raised, triangular nucha: lateral plicae complete, curved. Mesosoma in lateral view with propodeum declived at about  $50^\circ$  to plane of mesonotum; upper triangle of mesepimeron smooth. Legs with front and hind femora rather stout.

Forewing (fig. 2) extending beyond apex of gaster, 2.2 times as long as broad; lengths of costal cell: marginal vein: stigmal vein: postmarginal vein as 36:16:11:12; setae on submarginal, marginal and postmarginal veins short but robust; apical fringe present; pilosity of disc short and pale, speculum large and open below; basal cell and vein bare.

Gaster (fig. 2) ovate and apically acuminate, about 1.17 times as long as rest of body and 2.2-2.45 times as long as broad; hypopygiuni reaching slightly beyond middle of gaster.



**Figs. 1, 2:** *Mesopolobus bonessi* sp. n., 1. pedicel and flagellum of left antenna ♀; 2. body and left forewing of ♀.

**Figs. 1, 2:** *Mesopolobus bonessi* sp. n., 1. pedicelo y flagelo de la antena izquierda de la hembra; 2. cuerpo y ala anterior izquierda de la hembra.

Male. Unknown.

Holotype ♀. Fuerteventura. Tarajalejo, reared from gall of Cecidomyiidae on ?*Zygophyllum fontanesi*, leg. 2.iv. 1987. M. Boness. To be deposited in the Natural History Museum, London.

Paratypes. 4 ♀ ♀, same data as holotype.

Additional material. 2 ♀ ♀ with heads missing, same data as holotype.

*M. borzessi* is allied to *M. szelenyii* Boucek, 1974, the two species both having a dark fascia running from the parastigma of the forewing, a short postmarginal vein, short antenna and relatively broad head. *M. bonessi* may be distinguished from *M. szelenyii* by its greenish thorax (dark violet in *M. szelenyii*) and clear yellow femora and tibiae (metallic and infuscate in *szelenyii*), by its narrower gaster (only about 1.7 times as long as broad in *szelenyii*) and by stronger sculpture on the lower face and mesoscutum. The pronotal collar is shorter in *M. bonessi* than in *M. szelenyii*, and has a weaker anterior carina. The new species has been compared with material of *M. szelenyii* collected in Spain (Zaragoza). The collection of cecidomyiid galls that produced *M. bonessi* also yielded *M. maculipennis* (q.v.).

I have pleasure in naming this species after Dr Martin Boness who discovered it and who, over many years, has generously given me large numbers of chalcids that he has reared.

\**Mesopolobus tibialis* (Westwood, 1833)

Tenerife: Punta del Hidalgo, 27.iii. 1984, 1 ♂

*Pachyneuron aeneum* (Masi, 1929)

Lanzarote: Pleitito, 30.iii-3.iv. 1985, 5 ♀ (Ashmole, P.).

*Pachyneuron aphidis* (Bouché, 1834)

Tenerife: Barranco de San Andrés, 9.iii. 1985, 1 ♂.

Lanzarote: Pleitito, 30.iii-3.iv. 1985. 1 ♀ (Ashmole, P.).

*Pachyneuron formosum* (Walker, 1833)

Tenerife: Santa Ursula, 12.ii. 1985, 1 ♀; Vueltas de Taganana, 4.vi. 1985, 1 ♀; Barranco de San Andrés. 9.iii. 1985, 1 ♂; Monte de Los Silos, 17.ix. 1985. 1 ♀.

Lanzarote: Pleitito. 30.iii-3.iv. 1985, 1 ♀ (Ashmole, P.).

\**Pachycrepoides vindemmiae* (Rondani, 1875)

Lanzarote: Pleitito. 30.iii-3.iv. 1985. 2 ♀ ♀ (Ashmole, P.).

\**Pteromalus albipennis* (Walker, 1835)

Tenerife: Cumbre de Erjos. 30.iv. 1985, 1 ♀.

Additional material belonging to the *P. albipennis* group has been found on Tenerife. Lanzarote. La Goniera and Fuerteventura. The specific identity of this material is uncertain.

\**Pteromalus amage* (Walker, 1849)

Tenerife: Punta del Hidalgo. 27.iii. 1989. 1 ♀; La Tejita. 9.iv. 1986. 2 ♂ ♂; Puerto de Erjos. 16.x. 1984. 1 ♂; Barranco de San Andrés, 9.iii. 1985. 1 ♂.

Gran Canaria: Marzagán. 17.ii. 1985. 1 ♂.

La Palma: El Charco, 28.v. 1984, 1 ♂.



*Pteromalus ellisorum* (Gijswijt, 1984)

Lanzarote: Haria. 22.ii. 1979, 1 ♂, 20.iii. 1985, 1 ♀.

*Pteromalus puparum* (Linnaeus, 1758)

Tenerife: Barranco de Ruiz. 19.iv. 1989, 1 ♀; Las Lagunetas **ex** pupa *Argynnis pandora* (Dennis & Schiffermüller, 1775) (*Lepidoptera*, *Nymphalidae*), 3.v. 1973, 1 ♂ 2 ♀ ♀; Punta del Hidalgo, 27.iii. 1984, 1 ♂.

La Gomera: Tecina, 28.iii. 1978, 1 ♀.

*Pteromalus speculifer* (Graham, 1981)

Tenerife: Teno Bajo, 15.iv. 1988, 1 ♀.

*Pteromalus* sp. nr *tripolii* (Graham, 1969)

Tenerife: La Tejita, 9.iv. 1985, 2 ♂ ♂ 2 ♀ ♀.

Material of at least ten further species of *Pteromalus* from the Canary Islands remains unidentified.

*Spilomalus atlanticus* (Gijswijt & Graham, 1986)

Tenerife: Cumbre de Erjos, 30.iv. 1985, 1 ♂; El Teide snowfield, 30.iii. 1984, 1 ♀ (Ashmole, P.).

*Stenoselma nigrum* (Delucchi, 1956)

Tenerife: La Tejita, 9.iv. 1986, 1 ♀; Las Cañadas, 1.iv. 1973, 1 ♀ (Chandler, P.J. & Jackson, C.H.).

Lanzarote: Pleitito, 30.iii-3.iv. 1985, 3 ♂ ♂ (Ashmole, P.).

\**Trichomalopsis ?micropterus* (Lindeman, 1887)

Tenerife: El Teide snowfield, 1.v. 1984, 1 ♀ (Ashmole, P.).

\**Trichomalus bracteatus* (Walker, 1835)

Tenerife: Ijuana, 7.vi. 1985, 1 ♂; Barranco de Ruiz, 19.iv. 1989, 1 ♂.

\**Trichomalus rufinus* (Walker, 1835)

Tenerife: Ijuana, 7.vi. 1985, 3 ♂ ♂.

La Palma: La Galga, 25.v. 1976, 1 ♂ (Chandler, P.J.).

\**Urolepis maritima* (Walker, 1834)

Fuerteventura: Barranco Los Molinos, 2.iii. 1990, 2 ♂ ♂ 3 ♀ ♀.

## COLOTRECHNINAE

*Colotrechnus viridis* (Masi, 1921)

Lanzarote: Pleitito. 30.iii-3.4. 1985, 1 d (Ashmole, P.).

**Eupelmidae**\**Anastatus (Anastatus)* sp.

Tenerife: Las Cañadas. Malaise trap. 17.viii. 1996, 1 ♀ (Caniacho, A.).

\**Calosota* sp.

Tenerife: Las Cañadas. Malaise trap, 1996, 2 ♂ ♂ (Camacho, A.); 2.x. 1996, 1 ♂ (Oromi, P.).

*Eupelmus moroderi* (Bolivar, 1933)

Tenerife: Bajamar, 3.11, 1980, 1♀ (Ortega, G.).

\**Eupelmus urozonus* (Dalman, 1820 agg.)

Tenerife: Las Cañadas, Malaise trap, 1996, 1♀ (Oromi, P.).

**A** form with infumate wings.

\**Eupelmus* sp. C

Tenerife: El Médano coastal scrub, 3.iv. 1973, 1♀ (Chandler, P.J. & Jackson, C.H.); Punta del Hidalgo, 27.iii. 1984, 1♀.

Gran Canaria: Marzagán, 17.ii. 1985, 1♂ 1♀.

This species is allied to *E. moroderi* but has a much shorter ovipositor, only as long as hind tibia.

\**Eupelmus* sp. D

Tenerife: Malpaís de Guimar, 16.v. 1986, 1♀.

\**Eusandalum* sp.

Tenerife: Las Cañadas, Malaise trap, 1996, 1♂ (Zurita, N.).

\**Metapelma nobile* (Forster, 1860)

Tenerife: Las Cañadas, Malaise trap, 1996, 1♀ (Zurita, N.).

### Encyrtidae

\**Aenasius phenacocci* (Bennett, 1957)

La Palma: S/G de Co. Poluso, 29.xii. 1985, 1♀ (Rafael, G.B.) *A. phenacocci* is a New World species described from Trinidad. Specimens in the Natural History Museum (London) are from USA (California), Costa Rica, Colombia, Guyana, French Guiana, Ecuador, Peru, Uruguay, Trinidad, St Vincent and the Cayman Islands. Its appearance in the Canary Islands must be the result of an accidental introduction. The identity of the insect from La Palma was established with the help of Dr J.S. Noyes.

*Anagyrus ?matritensis* (Mercet, 1921)

Tenerife: Barranco del Agua, 28.v. 1985, 1♀.

\**Charitopus fulviventris* (Forster, 1860)

Tenerife: Las Cañadas, Malaise trap, 30.x. 1996, 1♀ (Arechavaleta, M.).

\**Copidosoma* sp.

Tenerife: Las Cañadas, 8.vi. 1956, 2♀.

*Dicarnosis superbus* (Mercet, 1921)

Tenerife: Santa Cruz, 31.iii. 1956, 1♀.

*Encyrtus infelix* (Embleton, 1902)

Tenerife: La Cuesta, 5.iv. 1985, 1♀.

\**Ericydnus* sp. nr *atriceps* (Walker, 1872)

Tenerife: Monte de Los Silos, 17.ix. 1985, 1♀.

\**Ericydnus sipylus* (Walker, 1837)

Tenerife: Cumbre de Erjos, 25.ii. 1985, 1♀

*Ericydnus strigosus* (Nees, 1834)

Gran Canaria: Marzagán, 17.ii. 1985, 1 ♀.

\**Homalotylus nigricornis* (Mercet, 1921)

Tenerife: Santa Ursula, 1.vii. 1979, 1 ♂.

*Isodromus flaviscutum* (Hoffer & Trjapitzin, 1978)

Tenerife: Punta del Hidalgo, 29.ix. 1986, 1 ♀. GIJSWIJT (1990) records "*I. punctipes* (Howard)" from Tenerife. *I. puncticeps* Howard, 1885 *sensu* Mercet, 1921 is the same as *I. flaviscutum* and probably the species mentioned by Gijswijt.

\**Leptomastix epona* (Walker, 1844)

Tenerife: Las Aguas, 25.x. 1985, 2 ♀ ♀.

Lanzarote: Pleitito, 30.iii-3.iv. 1985, 3 ♂ 6 ♀ 579 ♀ (Ashmole, P.).

La Palma: San Juan near Todoque, 18-22.viii. 1986, 1 ♀ (Ashmole, P.).

All of these specimens are very dark with much restricted pale markings.

*Metanotalia maderensis* (Walker, 1872)

Tenerife: La Cuesta, 15.v. 1989, 1 ♀.

\**Pentacladocerus ?matranus* (Erdos, 1963)

Tenerife: La Tejita, 9.iv. 1986, 1 ♂.

*Procheiloneurus cabrerai* (Mercet, 1919)

La Palma: La Cumbrecita, 29.v. 1976, 1 ♀ (Chandler, P.J.); Teneguia, water trap, 17-21.viii. 1996, 2 ♀ (Ashmole, P.). Recorded by GIJSWIJT (1990) from Tenerife; originally described from material collected by A. Cabrera at Santa Cruz de Tenerife.

*Syrphophagus aeruginosus* (Dalman, 1820)

Fuerteventura: La Antigua, 7.v. 1974, 10 ♂ ♂ 4 ♀ ♀ ex puparium of *Eupeodes corollae* (Fabricius, 1794) (*Diptera, Syrphidae*).

Tenerife: Las Cañadas, 8.vi. 1986, 2 ♀ ♀; Cumbre de Erjos, 30.iv. 1985, 2 ♀ ♀.

## Eulophidae

### EULOPHINAE

*Cirrospilus pictus* (Nees, 1834)

Tenerife: Aguamansa, 1400m, ex *Phyllonorycter cytisifoliae* Hering (*Lepidoptera, Gracillariidae*) on *Chamaecytisus proliferus*, collected 27.xii. 1981, emerged 8.i. 1982, 1 ♀ (De Prins, W.O.).

This specimen is of form *atlanticus* recorded by Askew (1982) from *Chrysopota uroseae* in Tenerife. *C. pictus* is mentioned from the Canary Islands by OTTEN (1940).

\**Cirrospilus vittatus* (Walker, 1838 agg.)

Tenerife: El Teide, snowfield, 1.v. 1984, 1 ♀ (Ashmole, P.) A dark form with relatively narrow forewings.

*Diaulinopsis arenaria* (Erdős, 1951)

Lanzarote: Halcones Isloto West, 25-29.iii. 1985, 1 ♀ (Ashmole, P.).

*Diglyphus crassinervis* (Ei-doc, 1958)

La Palma: Fuencaliente, 13.xii. 1953, 2 ♂ ♂ (Rafael, G.B.).

Tenerife: Barranco de San Andrés, 9.iii. 1985, 1 ♂; Puerto de Erjos, 16.x. 1984, 1 ♂; Monte de Los Silos, 16.x. 1984, 1 ♂.

\**Diglyphus* sp. nr *isaea* (Walker, 1838)

Lanzarote: Pleitito, 30.iii-3.iv. 1985, 1♂ 2♀ (Ashmole, P.) Form with pale markings on head and mesopleuron, hind tibia mostly pale, propodeuni weakly reticulate. forewing less densely pilose than in *isaea* with incipient speculum.

*Diglyphus* ?*eleanorae* (Graham, 1981)

Tenerife: Palo Blanco, 5.v. 1985, 1♀.

Differs from *D. eleanorae* from Madeira in being large and having a narrower and more elongated thorax. *D. eleanorae* is recorded from Tenerife by GIJSWIJT (1990).

\**Elachertini* gen. et sp. indet.

Tenerife: Ijuana, 22.xi. 1985, 1♂ 1♀; Taganana, 7.ii. 1986, 1♀.

In a genus close to *Bryopezus* Erdos and *Ginsiella* Erdos but differs significantly from both species included in these monotypic genera.

\**Elachertus nigrutilus* (Zetterstedt, 1838)

Tenerife: Las Cañadas, 8.vi. 1986, 1♀.

\**Elachertus* sp. nr *isadas* (Walker, 1839)

Tenerife: Monte Aguirre, 11.vi. 1985, 1♀.

*Euplectrus flavipes* (Fonscolombe, 1832)

Tenerife: Las Casillas, 4.x. 1984, 1♂.

*Hemiptarsenus unguicellus* (Zetterstedt, 1838)

Tenerife: Ijuana, 7.vi. 1985, 2♀; La Cuesta, 15.v. 1989, 1♀

\**Microlycus virens* Erdos 1951

Lanzarote: Tabaibas. 30.iii-3.iv. 1985, 1♀ (Ashmole, P.).

*Necremnus artynes* (Walker, 1839)

Tenerife: La Cuesta, 15.v. 1989, 1♀; Punta del Hidalgo, 27.iii. 1984, 1♂.

\**Necremnus cosconius* (Walker, 1839)

Tenerife: Barranco del Agua, 28.v. 1985, 1♂.

*Necremnus metalarus* (Walker, 1839)

Lanzarote: Pleitito, 30.iii-3.iv. 1985, 5♂ 3♀ (Ashmole, P.).

*Necremnus tidius* (Walker, 1839)

Lanzarote: Pleitito, 30.iii-3.iv. 1985, 1♀ (Ashmole, P.).

*Pnigalio pectiicoriiis* (Linnaeus, 1758)

Tenerife: Puerto La Cruz, 27.x. 1985, 1♂; Monte de Los Silos, 17.ix. 1985, 1♂.

\**Sympiesis dolichogaster* Ashmead. 1888

Tenerife: Monte Aguirre, 10.ix. 1984, 1♀.

\**Sympiesis sericeicornis* (Nees. 1834)

La Palma: El Charco. 28.v. 1984, 1♀ form *maderensis* Graham. 1979.

\**Sympiesis* sp. nr *viridula* (Thomson, 1878)

Tenerife: Barranco del Agua, 7.xii. 1985, 1♀.

## ENTEDOXINAE

\**Asecodes* sp.

Fuerteventura: Tarajalejo, apparently ex cecidomyiid galls on ?*Zygophyllum fontanesi* collected 2.iv. 1987, 1♂ 1♀ (Boness, M.).

This species is near to *A. mento* (Walker, 1839).

\**Ceranisis menes* (Walker, 1839)

Tenerife: Neuston Net offshore, 20.vi. 1984, 1♀ (Ashmole, P.).

Lanzarote: Pleitito, 30.iii-3.iv. 1985, 1♀ (Ashmole, P.).

\**Ceranisis* sp.

Tenerife: La Cuesta, 15.v. 1989, 1♀.

A large species with pale flagellum and long gaster.

*Chrysocharis entedonoides* (Walker, 1872)

Tenerife: Palo Blanco, 11.iv. 1984, 1♀; 29.xi. 1985, 1♂; Monte Aguirre, 11.vi. 1985, 1♀; Cumbres de Erjos, 30.iv. 1985, 1♀; without locality or date, ex mine of *Phytomyza* sp. (*Diptera*, *Agromyzidae*) in *Ranunculus*, 1♀ (in the Natural History Museum, London).

*Chrysocharis gemma* (Walker, 1839)

Gran Canaria: Brezal de Moya, 10.iii. 1977, 1♀

50♀♀ from this locality are recorded by HANSSON (1985).

Tenerife: Palo Blanco, 5.v. 1985, 1♀.

\**Chrysocharis ?orbicularis* (Nees, 1834)

Tenerife: Cumbres de Erjos, 26.ii. 1986, 1♂ 1♀.

The dorsellum and petiole are longer than is usual in this species.

*Chrysocharis pallipes* (Nees, 1834) (= *chiio* Walker, 1839)

Tenerife: Puerto de Erjos, 16.x. 1984, 1♂.

HANSSON (1985) records this species from Tenerife, and GIJSWIJT (1990) from Tenerife, La Gomera and Gran Canaria.

\**Chrysocharis pubens* (Delucchi, 1954)

Tenerife: Ijuana, 8.xi. 1985, 1♀; Zapata, 2.iii. 1985, 1♀; 5.ii.1985, 1♀ (Ortega, G.); Genoves, 15.ii. 1985, 1♂.

\**Entedon* sp. in group of *hercyna* (Walker, 1839)

Tenerife: Monte de Los Silos, 12.iii. 1985, 1♀ (Ortega, G.).

*Neochrysocharis formosa* (Westwood, 1823)

Tenerife: Puerto de la Cruz. ex mines of *Stigmella jubae* (*Lepidoptera*, *Nepticulidae*) in *Euphorbia obtusifolia* and *E. regisjubae*, collected 28.xii. 1981, emerged i. 1982, 2♂♂ 1♀ (De Prins, W.O.).

*Neochrysocharis* sp. nr *formosa* (Westwood, 1833)

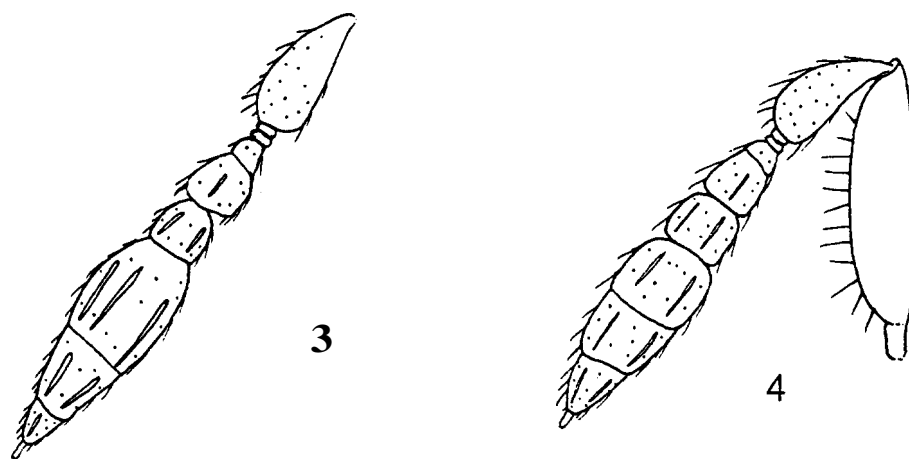
Lanzarote: Pleitito, 30.iii-3.iv. 1985, 1♂ 4♀♀ (Ashmole, P.) Thoracic dorsum violet. shining; funicle segments short.

*Neochrysocharis violacea* Askew sp. n.

Female. Head and mesosoma dark brown with strong violet reflections. a tinge of green laterally on propodeum; mesoscutum and scitellum concolorous; gaster brown

with weak violet reflections, some green on first tergite; antenna pale. testaceous, the clava dorsally brownish with white apical stylus; coxae concolorous with thorax, trochanters pale yellow, femora infuscate except apically, rest of legs pale yellow except for slightly brown flexor surface of front tibia and fourth tarsal segments and brown claws; wings hyaline with pale yellow veins and white pilosity. tegulae brown. Length 1.4-1.6mm.

Head with vertex finely reticulate, hairs about 1.5 times ocellar diameter: frons very weakly reticulate, about 10 hairs on lower face between lower eye margin and mouth, toruli on lower ocular line. Malar space about 0.6 times mouth opening. Antenna with scape slender, 5 times as long as broad and 0.7 times height of eye; length of pedicel plus flagellum (fig. 3) 0.8 times breadth of head; pedicel twice as long as broad, hairy; three



**Figs. 3-4:** *Neochrysocharis violacea* sp. n., 3, pedicel and flagellum of left antenna ♀; 4, left antenna ♂.

**Figs. 3-4:** *Neochrysocharis violacea* sp. n., 3, pedicelo y flagelo de la antena izquierda de la hembra; 4, antena izquierda de la hembra.

anelli, the third large and closely applied to first funicle segment: length of anelli plus two subquadrate funicle segments only slightly greater than length of pedicel, the funicle segments distinctly narrower than pedicel; clava elongated, conical, about 3 times as long as broad and almost 1.5 times as long (including stylus) as combined length of anelli and funicle segments, apical stylus about 0.7 times as long as third claval segment.

Mesosoma in dorsal view about 1.5 times as long as broad, finely but distinctly reticulate, meshes on scutelluni elongated: mesoscutum 1.7 times as broad as long with two pairs of long setae, notaular depressions broad and very shallow: scutelluni almost as long as mesoscutum and as broad as long, with one pair of setae: dorsellum short, connex. weakly reticulate; anterior margin of mesepimeron almost straight: propodeum about 3 times as long as dorsellum, weakly reticulate. callus with two setae.

Forewing 2.2 times as long as broad. ratio length from base of parastigma to wing apex: maximum wing breadth (LW:HW of Hansson (1990)) = 1.7: lengths of costal cell: marginal vein: stigmal vein: postmarginal vein as 29:24:11:9; hair-lines radiating from stigma absent and space between postmarginal and stigmal veins pilose: speculum hardly developed: basal cell with some hairs towards apex: submarginal vein with 5 or 6 short hairs beneath.

Gaster long ovate, 2.6-3.0 times as long as broad, about 1.2 times as long as rest of

body, mesosoma length: gaster length 0.62: petiole very short; hypopygium reaching 0.38 length of gaster; apices of ovipositor sheaths just visible in dorsal view.

Male. Differs very little from female except for structure of gaster; antenna (fig. 4) with scape broader, about 4 times as long as broad with a conspicuous row of setae along its ventral edge.

Holotype ♀. Lanzarote. Famara, reared as a gregarious endoparasitoid of *Asphondylia conglomerata* (Diptera, Cecidomyiidae) on *Atriplex halimus*, leg. iii. 1992, U. Sellenschlo. To be deposited in the Natural History Museum, London.

Paratypes. 2♂♂ 19♀♀, same data as holotype. Will be deposited in Museo de Ciencias Naturales (Madrid), the Royal Museum of Scotland (Edinburgh) and in the author's collection.

*N. violacea* is readily distinguished from other described species of *Neochrysocharis* by the unique combination of an elongated gaster, large third anellus, violet coloration and predominantly dark femora and pale tibiae.

\**Pediobius pyrgo* (Walker, 1839)

Tenerife: Punta del Hidalgo, 27.iii. 1984, 1♂.

\**Pediobius saulius* (Walker, 1839)

Tenerife: Punta del Hidalgo, 27.iii. 1984, 1♀; Ijuana, 7.vi. 1985, 1♀.

#### EUDERINAE

\**Euderus* sp. nr *gracilis* (Graham, 1984)

Tenerife: Malpaís de Guimar, 11.xii. 1989, 2♀♀.

Gaster four times as long as broad and 1.6 times as long as rest of body.

*Wichmannia pictipennis* (Boucek, 1972)

Tenerife: Fuente Joco, 30.iv. 1987, 1♀.

The original material was reared from twigs of *Euphorbia canariensis*, infested by *Scolytidae* (Coleoptera), collected in 1970 at Barranco de Bufadero, Tenerife (BOUCEK, 1972).

#### TETRASTICHINAE

*Aprostocetiis asperulus* (Graham, 1981).

Tenerife: Afur, 2.ix. 1985, 1♀; Santa Ursula, 1.vii. 1979, 1♀.

[Several other species of *Aprostocetus* have yet to be firmly identified.].

\**Minotetrastichus frontalis* (Nees, 1834) (= *ecus* Walker, 1838).

Tenerife: Santo Domingo, ex mine of *Tischeria longiciliata* (Lepidoptera, Tischeriidae) on *Rubus ulmifolius*, collected 21.xii.1981, emerged 9.i. 1982, 1♀ (De Prins, W. O.).

\**Sigmophora italica* (Domenichini, 1967)

Tenerife: Genovés, 15.ii. 1985, 1♂.

\**Tamarixia nctis* (Walker, 1839)

Tenerife: Fuente Joco, 30.iv. 1987, 1♀; Palo Blanco, 5.v. 1985, 1♂.

Recorded from the Azores by GRAHAM (1991).

\**Tamarixia* sp. nr *pubescens* (Nees, 1834)

Lanzarotz: Pleitito, 30.iii-3.iv. 1985, 1♀ (Ashmole, P.) Differs from specimens

from mainland Europe in its shorter funicle segments, less pilose forewing and mainly pale yellow gaster.

*Tamarixia* sp. indet. (Grahani, 1991)

Lanzarote: Pleitito, 30.iii-3.iv. 1985, 4♂♂ 3♀♀ (Ashniole. P.) GRAHAM (1991: 285) mentions this form from Tenerife and Turkey; it is either an undescribed species or a variant of *T. pallicornis* (Walker, 1872).

### Tetracampidae

\**Epiclerus femoralis* (Walker, 1872)

La Gomera: Bailadero, 21.viii. 1977, 1♂.

*E. femoralis* may be only a form of *E. panyas* (Walker, 1839). The latter is listed from Tenerife by GIJSWIJT (1990).

### Aphelinidae

\**Aphelinus abdominalis* (Dalman, 1820)

Tenerife: Barranco de San Andrés, 9.iii. 1985, 2♀♀; Barranco del Agua, 22.vi. 1984, 1♀.

\**Aphelinus asychis* (Walker, 1839)

Tenerife: Genovés, 15.ii. 1985, 1♀; La Tejita, 9.iv. 1986, 1♀.

*Aphelinus mali* (Haldeman, 1851)

Fuerteventura: Vallebrón, 7.iii. 1984, 1♀.

### Signiphoridae

\**Chartocerus conjugalis* (Mercet, 1916)

La Palma: San Juan near Todoque, 18-22.viii. 1986, water trap, 1♀ (Ashmole, P.).

### Trichogrammatidae

\**Oligosita* sp.

La Palma: San Juan near Todoque, 18-22.viii. 1986, water trap, 1♀ (Ashmole, P.).

\**Tumidiclava* sp.

La Palma: Teneguia, 17-21.viii. 1986, water trap, 1♀ (Ashniole. P.).

### Mymaridae

\**Polynema* sp.

Tenerife: Ijuana, 8.xi. 1985, 1♂; Palo Blanco, 29.xi. 1985, 1♂

### ACKNOWLEDGMENTS

We are indebted to J. S. Noyes for help in the identification of *Aenasius phenacocci*, and to the following for generously making their material available: P. Ashmole, M. Boness, P. J. Chandler, W. O. De Prins, M. J. Gijswijt and J. Pujade.



## REFERENCES

- AROZARENA, R., 1966a. Nuevas citas para Canarias de la subfamilia Encirtinae (Hymenoptera). *Graellsia*, 22: 47-56.
- 1966b. Los parásitos de la *Ceinritis capitata* Wied. Instituto de Estudios Canarios, Sección IV (Ciencias Naturales). 12: 29-37.
  - 1978. Aportaciones de la superfamilia Chalcidoidea a la lucha biológica en la isla de Tenerife (Hym., Chalcidoidea). *Vieraea*, 7: 191-200.
- ASKEW, R.R., 1982. New species of Eulophidae (Hym., Chalc.) from Madeira, with some observations on the fauna. *Bocagiana*, 64: 1-9.
- 1993. Some Pteromalidae (Hym., Chalcidoidea) from Monegros, with descriptions of four new species. *Eos*, 69: 75-82.
- BOUCEK, Z., 1951. The first revision of the European species of the family Chaicididae (Hymenoptera). *Acta. ent. Mus. natn. Pragae*, 27 suppl. 1: 1-108 + plates 1-17.
- 1972. Descriptions of new Eulophid parasites (Hym., Chalcidoidea) from Africa and the Canary Islands. *Bull. ent. Res.*, 62: 199-205.
- GIJSWIJT, M.J., 1984. *Pteromalus ellisorum*, a new species from the Canary Islands (Hymenoptera: Chalcidoidea: Pteromalidae). *Ent. Ber. Amst.*, 44: 62-64.
- 1990. Chalcidoidea of the Canary Islands (Hymenoptera). *Vieraea*, 18: 103-112.
- GIJSWIJT, M.J. & GRAHAM, M.W.R. de V., 1986. The genus *Spilomalus* Graham, 1956 (Hymenoptera: Chalcidoidea, Pteromalidae). *Ent. Ber. Amst.*, 46: 124-127.
- GRAHAM, M.W.R. de V., 1991. A reclassification of the European Tetrastichinae (Hymenoptera: Eulophidae); revision of the remaining genera. *Mem. Am. ent. Inst.*, 49: 1-322.
- GRISSELL, E.E., 1979. Subfamily Megastigminae. In K.V. Krombein & H.D. Hurd, Jr (eds). *Catalog of Hymenoptera in America North of Mexico*. Smithsonian Institution Press, Washington, D.C. Vol. 1: 1198pp.
- 1995. *Toryminae (Hymenoptera: Chalcidoidea: Torymidae): a redefinition, generic classification, and annotated world catalog of species*. Memoirs on Entomology, International, Vol. 2. Associated Publishers, Gainesville, Florida: 470pp.
- HABECK, D.H., BENNETT, F.D. & GRISSELL, E.E., 1989. First record of a phytophagous seed chalcid from Brazilian peppertree in Florida. *Fla Ent.*, 72: 378-379.
- HANSSON, C. 1985. Taxonomy and biology of the Palearctic species of *Chrysocharis* Förster, 1856 (Hymenoptera: Eulophidae). *Ent. scand. Suppl.*, 26: 1-130.
- HEDQVIST, K.-J., 1969. Notes on the genus *Astichus* Forst. and description of new species (Hym., Chalcidoidea, Eulophidae, Euderinae). *Ent. Tidskr.*, 90: 166-173.
- 1974. Notes on Chalcidoidea from the Canary Islands (Hymenoptera). I. A new species of *Plutothrix* Först. (Pteromalidae). *Vieraea*, 3: 36-38.
  - 1977. Two reared species of Torymidae and Eulophidae from Tenerife, Canary Islands (Hym., Chalcidoidea). *Ent. scand.*, 8: 235-237.
  - 1978. *Guancheria compressithorax* n. gen., n. sp. from Tenerife, Canary Islands (Hym., Chalcidoidea, Pteromalidae). *Ent. scand.*, 9: 319-320.
  - 1979. Description of two new species reared from *Dasychira fortunata* Rghfr. in Canary Islands (Hym., Chalcidoidea, Torymidae and Proctotrupoidea, Scelionidae). *Vieraea*, 8: 77-82.
  - 1983. A new species of the genus *Cleonymus* Latr. from the Canary Islands (Hym., Chalcidoidea, Pteromalidae). *Vieraea*, 12: 129-133.
- MERCET, R.G., 1923. Encirtidos de Canarias. *Bol. Real soc. esp. hist. natur.*, 23: 138-145.
- OTTEN, E., 1940. Gezogene Chalcididen und ihre Wirte. *Arb. morph. taxon. Ent. Berl.*, 7: 177-202.

PEREZ, J., 1895. Voyage de M. Ch. Alluaud aux îles Canaries. Hymenopteres. *Annls Soc ent. Fr.* 1395: 191-204.

*Fecha de recepción: 28 marzo 1998*

*Fecha de aceptación: 1 septiembre 1998*

**M. Báez**. Departamento Biología Animal, Universidad de La Laguna. 38106 La Laguna, Tenerife. Islas Canarias, ESPAÑA.

**R.R. Askew**. 5 Breston Hall Mews, Beeston. Tarpoley, Cheshire CW6 9TZ, U.K.