

Description of two new species reared from *Dasychira fortunata* Rghfr. in Canary Islands (Hym., Chalcidoidea, Torymidae and Proctotrupoidea, Scelionidae)

by

KARL-JOHAN HEDQVIST

Description of two new species reared from *Dasychira fortunata* Rghfr. in Canary Islands (Hym., Chalcidoidea, Torymidae and Proctotrupoidea, Scelionidae)

by

KARL-JOHAN HEDQVIST

ABSTRAC

The author describes *Monodontomerus canariensis* n. sp. reared from larvae of *Dasychira fortunata* Rghfr. and *Telenomus guancheri* n. sp. reared from eggs of the same host.

RESUMEN

Descripción de dos nuevas especies obtenidas de *Dasychira fortunata* Rghfr. en las Islas Canarias (Hym., Chalcidoidea, Torymidae y Proctotrupoidea, Scelionidae)

El autor describe *Monodontomerus canariensis* n. sp. obtenido de larvas de *Dasychira fortunata* Rghfr. y *Telenomus guancheri* n. sp. de huevos del mismo huésped.

From Josefina González I have received hymenopterous parasites reared from *Dasychira fortunata* Rghfr. for determination. The material consisted of two new species and they are described below.

Monodontomerus canariensis n. sp.

♀ Bluish black with knees, tips of tibiae and tarsi yellowish brown. Wings hyaline with wing veins dark brown and slightly fuscous around stigmal vein.

Head transverse, the breadth of head as the length of flagellum. Anterior margin of clypeus slightly curved forwards. Malar space 1/3 of the breadth of an eye. POL thrice OOL. Head coriaceous mixed with fine striation on vertex. Thorax coriaceous, scutellum has the coriaceous punctures mixed with fine striation, frenum is very fine alutaceous. Dorsellum smooth with a very fine median carina. Propodeum see fig. 1 A. Gaster with first segment completely smooth, the other gastral segments are finely alutaceous. Terebra as long as gaster + half thorax. Basal cell and speculum closed below, fore wing (fig. 1 C) with sparse hairs. Hind tibia (fig. 1 B) with two spurs one of them as long as 2/3 of first tarsal joint.

♂ Similar to the female but the longest spur of hind tibia nearly as long as the first tarsal joint.

LENGTH: ♀ 3.5-3.9 mm, ♂ 2.5-3.1 mm

HOLOTYPE: in coll. University of La Laguna, Tenerife, Canary Is., reared from *Dasychira fortunata* Rghfr., La Palma, July 1973.

PARATYPE: ♀ 15 ♂ 13 in coll. University of La Laguna and in coll. Hedqvist. Reared from *D. fortunata* and the same locality.

In the key of STEFFAN (1952) it runs to *Monodontomerus strobili* Mayr but differs from that species as follows.

M. strobili Mayr

Frenum smooth with very fine lenticular reticulation.

The punctured border line of scutellar apex not interrupted in the middle.

Propodeum fine striated.

Gastral first tergite with squamulate punctations.

Terebra longer than gaster.

M. canariensis n. sp.

Frenum smooth with fine alutaceous sculptures.

The punctured border line of scutellar apex slightly interrupted in the middle.

Propodeum smooth, sometimes with very fine alutaceous.

Gastral first tergite completely smooth.

Terebra as long as gaster + half Thorax.

Telenomus guancheri n. sp.

♀ Black with legs brownish, coxae, femora, claw-joints and a strip on the external aspect of the tibiae darker brown. Wing veins brown.

Head (fig. 2 A) smooth with vertex, inner and outer orbits reticulated. Antenna see fig. 2 C. Genal suture with a small process at the conjuncture with anterior margin. Scutum with fine coriaceous sculptures. Scutellum smooth. Dorsellum with longitudinal fine striation. Propodeum short in the middle and with triangular areola inside of each spiracle. Gaster see fig. 2 A.

♂ Similar to the female. Antenna see fig. 2 A.

LENGTH: ♀ 1.1-1.3 mm., ♂ 1.0-1.2 mm.

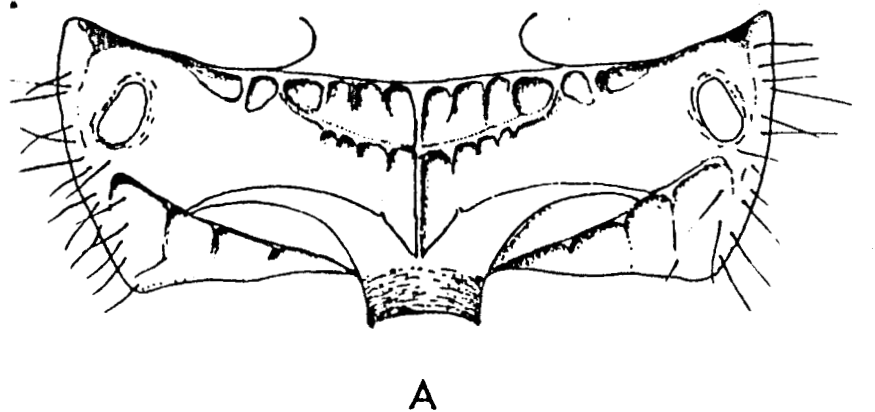
HOLOTYPE: in coll. University of La Laguna, Tenerife, Canary Is. Reared from eggs of *Dasychira fortunata* Rghfr. La Palma July 1973.

PARATYPE: 7 ♀ 6 ♂ in coll. University of La Laguna and in coll. Hedqvist. The same host and the same locality as holotype.

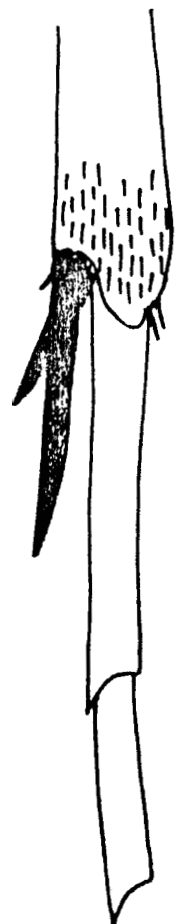
T. guancheri n. sp. is similar to *T. punctatissima* Ratzb. but differs as follows. Antenna is different in both sexes. 3rd flagellum joint much shorter than 2nd. 2nd gastral segment with very short longitudinal striation.

(Recibido el 3 de Abril de 1978)

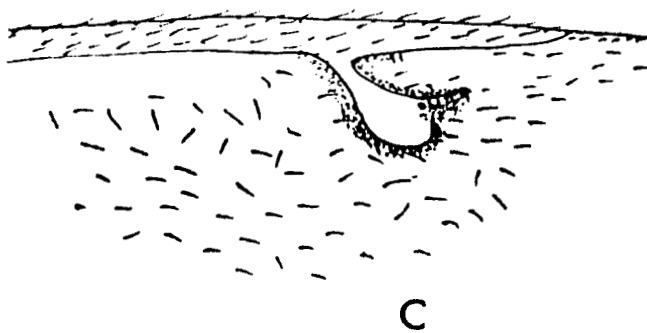
Swedish Nat. Sci. Res. Council,
c/o Dept. of Ent., Swedish Museum
of Natural History S-104 05
Stockholm, Sweden.



A



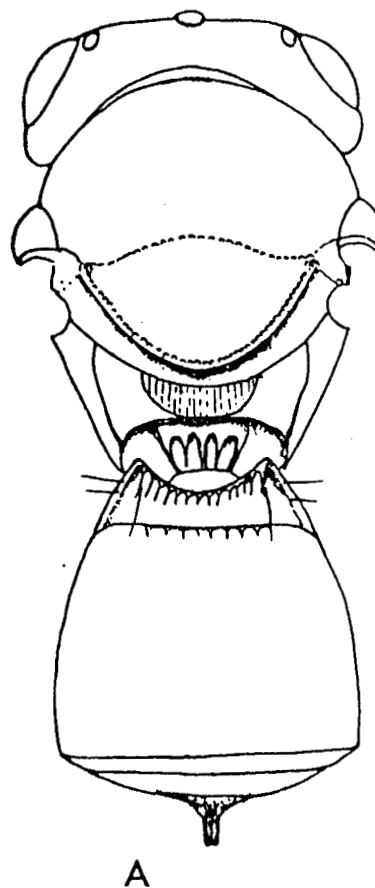
B



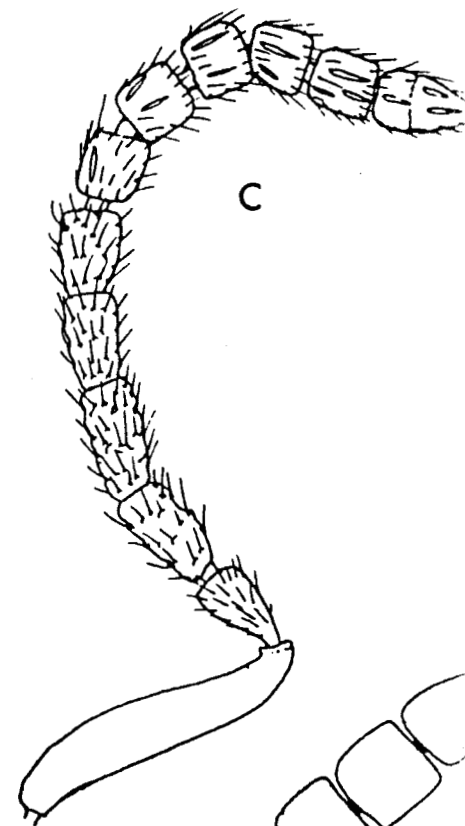
C

Fig. 1 *Monodontomerus canariensis*
n. sp. ♀.

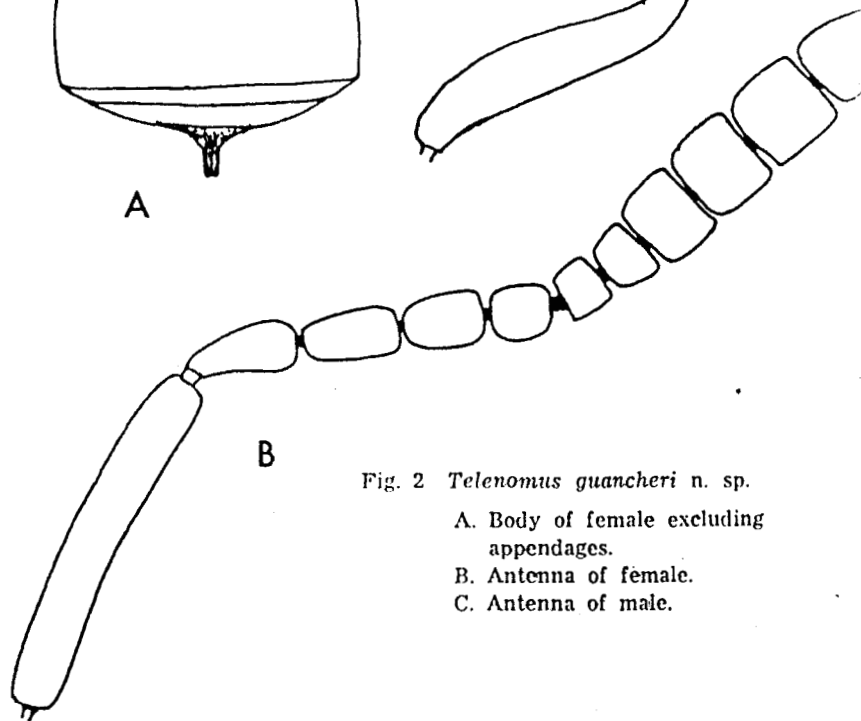
- A. Propodeum.
- B. Distal part of hind tibia.
- C. Stigmal vein.



A



C



B

Fig. 2 *Telenomus guancheri* n. sp.

- A. Body of female excluding appendages.
- B. Antenna of female.
- C. Antenna of male.

LITERATUR

KOZLOV, M. A. 1967. Palaeasctic species of egg parasites of the genus *Telenomus* Haliday (Hymenoptera, Scelionidae, Telenominae) (in Russian). — *Revue d'Entomologie de l'URSS*. XLVI, 288-293.

MASNER, L. 1976. Revisionary notes and keys to world genera of *Scelionidae* (Hymenoptera: Proctotrupoidae). — *Mem. Ent. Soc. Canada*. 97, 1-87.

MAYR, G. 1874. Die europaischen Torymiden. — *Verh. Zool.—bot. Ges. Wien*. 24, 53-142.

MAYR, G. 1880. Uber die Schlupfwespengattung *Telenomus*. — *Verh. Zool.—bot. Ges.* 29, 697-714.

STEFFAN, J. R. 1952. Note sur les espèces européennes et Nord-Africaines du genre *Monodontomerus* Westw. (Hym., Torymidae) et leurs hotes. — *Bull. Mus. Hist. nat. Paris*. 2:e sér. XXIV, 288-293.