

With the author's
comments

***Guancheria compressithorax* n. gen., n. sp. from Tenerife, Canary Islands
(Hymenoptera, Chalcidoidea: Pteromalidae)**

KARL-JOHAN HEDQVIST

Hedqvist, K.-J.: *Guancheria compressithorax* n. gen., n. sp. from Tenerife, Canary Islands (Hymenoptera, Chalcidoidea: Pteromalidae). Ent. scand. **9:319-320**. Lund, Sweden **15 December 1978**. ISSN **0013-8711**.

Guancheria compressithorax n. gen., n. sp. of the subfamily Pteromalinae is described. It is reared from *Acmaeodera cisti* Woll. (Buprestidae) from Lomo Blanco, Tenerife.

K.-J. Hedqvist, Swedish nat. Sci. Res. Council, c/o Dept of Ent., Mus. nat. Hist., **S-10405** Stockholm, Sweden.

Guancheria n. gen.

Type species: *Guancheria compressithorax* n. sp.

Diagnosis: *Guancheria* n. gen. differs from all other genera in Pteromatinae as follows: wings without hairs only with fine punctures; axillae meeting in front of scutellum.

Derivation of name: Named after the guancher, ancient inhabitants of the Canary Islands.

Description

Head wider than thorax. Antennae, **11263**, inserted just below a level with anterior margin of eyes. Clypeus with curved anterior margin. Thorax dorsally flattened with propodeum in same line as scutellum and mesoscutum. Prepectus moderately large. Collar rounded. Notauli not complete, only distinct anteriorly. Axillae meeting in front of scutellum, the latter nearly as wide as long. Propodeum with indistinct median carina. Spiracles situated as far from anterior margin of sclerite as from posterior margin. Callus with few hairs. Petiole short. Gaster elongate with stylus. Hind tibia with one spur. Fore wing without hairs but with fine punctures, no cilia at apex.

Subcostal vein about three times as long as marginal vein, the latter thick. Stigmal vein longer than post-marginal vein.

Guancheria compressithorax n. sp. (Figs 1, 2A-D)

Type area: Canary Islands, Tenerife, Lomo Blanco.

Type material: *Holotype*, ♀: Canary Islands, Tenerife, Lomo Blanco, **26.I.1977**, leg. T.-E. Leiler, in coll. Hedqvist. *Paratypes*: **8 ♀, 1 ♂** from same locality, **6 ♀, 1 ♂** in coll. Hedqvist, **2 ♀** in coll. Leiler.

Diagnosis: see diagnosis of the genus.

Description

FEMALE, Colour. Black with antennae and legs straw-coloured. Fore and hind coxae brown. Fore wing suffused below marginal vein.

Head (fig. 2 B) with fine reticulation. Malar space $\frac{2}{3}$ of the length of an eye. POL **2.5** times OOL. Antennal furrows indistinct. Antenna (fig. 2 A) with pedicellus as long as funicle joints **1+2** combined, all funicle joints quadratic and clava with sutures slightly oblique.

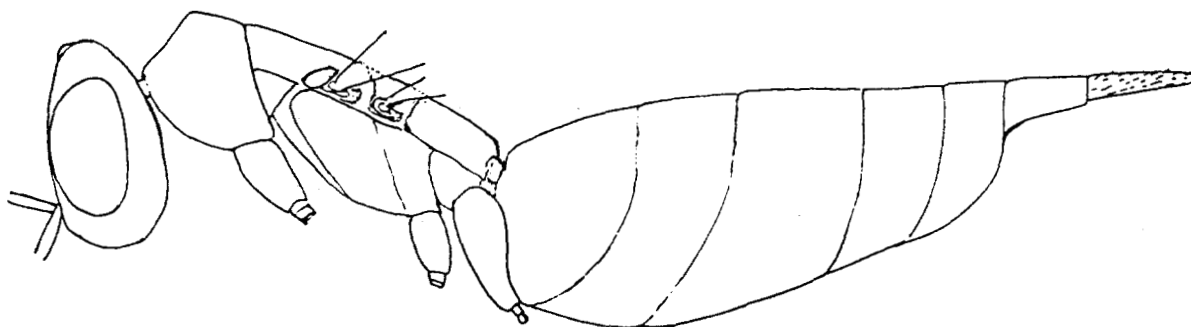
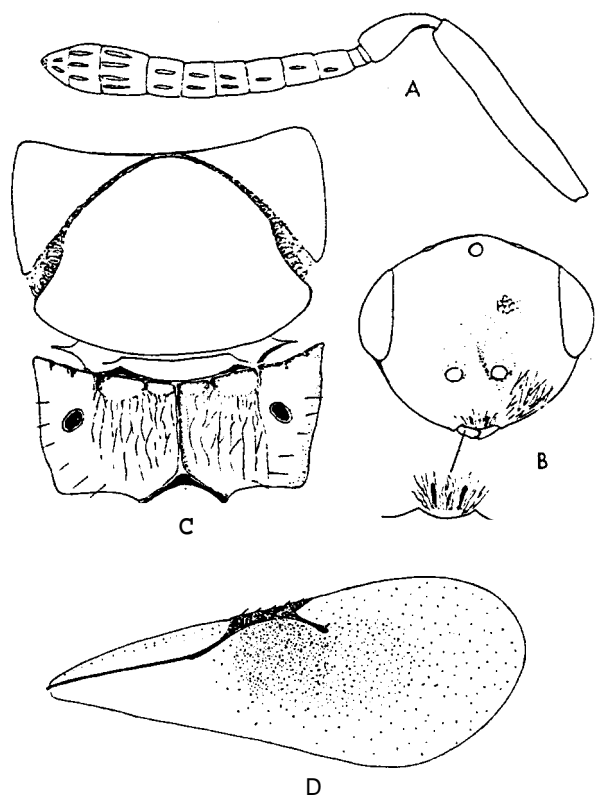


Fig. 1. *Guancheria compressithorax* n. gen., n. sp. ♀.



Thorax flattened (fig. 1) with fine reticulation. Scutellum and axillae (fig. 2 C) almost smooth. Dorsellum narrow, smooth. Propodeum (fig. 2 C) with indistinct nucha. Gaster (fig. 1) elongate. Pygostylar bristles equal in length. Legs slender with hind coxae elongate.

Fore wing (fig. 2 D).

MALE. Similar to female but antenna more clavate and shorter with funicle joints transverse. Legs more brownish.

Length: ♀ 2.1–2.2 mm, ♂ 1.6 mm.

All specimens reared from *Acmaeodera cisti* Woll. (Buprestidae) living in Retama (*Retama monosperma*).

Figs 2A–D. *Guancheria compressithorax* n. gen., n. sp. ♀. – A. Antenna. – B. Head in frontal view. – C. Axillae, scutellum and propodeum. – D. Fore wing.