

Two new reared species of Toryniidae and Eulophidae from Tenerife, Canary Islands (Hymenoptera: Chalcidoidea).

KARL-JOHAN HEDQVIST

Hedqvist, K.-J.: Two new reared species of Torynidae and Eulophidae from Tenerife, Canary Islands (Hymenoptera: Chalcidoidea). IV. Ent. scand. 8:235-237. Lund, Sweden 15 September 1977. ISSN 0013-8711.

Descriptions are given of *Torymus canariensis* n.sp. reared from a gall midge on *Artemisia canariensis*, and *Elachertus lasiodermæ* n.sp. reared from a beetle, *Lasioderma* n.sp. which later will be described by Israelsson, living in stems of thistles.

Karl-Johan Hedqvist. Swedish Nat. Sci. Res. Council, c/o Dept. of Entomology, Mus. nat. Hist. S-104 05 Stockholm. Sweden

This paper is the fourth in a series dealing with the Hymenoptera Parasitica of the Canary Islands. Three papers (one in print) are published in the journal *Vieraea*.

Torymus canariensis n.sp. (Fig. 1)

Type locality: Canary Islands, Tenerife, Taganana.

Type material: Holotype ♀, Canary Islands, Tenerife, Taganana, leg. Karl-Johan Hedqvist, in coll. Hedqvist.

Paratypes: 6 ♀ 18 ♂ from same locality and in same collection.

Diagnosis: In Hoffmeyer's key *T. canariensis* n.sp. runs to *T. abbreviatum* Boh. var. *macropterus* Walk., but this is a completely different species. One species is described by Perez (1895) from Tenerife as *Torymus femoralis* but this differs in colour and according to the description it seems to belong to *Pseudotorymus* Mas: ("les fémurs sont munis, à la place ordinaire, dans les genres voisins, d'un minutissime denticule").

Description

FEMALE. Colour. Bluish green with tint of violet on gaster. Antennal scapus basally and beneath yellow, flagellum dark brown. Mandibles and palpi yellow. Legs (except mid and hind coxae) and tegula yellow; fore tarsi, all claw-joints and tibiae (with a streak) fuscous (in some specimens wanting). Wing veins pale brown.

Head (fig. 1 C) below antennal sockets slightly protuberant. Antennae (fig. 1 A) inserted below middle of face, scipii not reaching median ocellus. Clypeus with anterior margin slightly arcuate. Malar space as long as half the breadth of an eye. POL twice OOL.

Thorax dorsally as head relatively strongly coriaceous. Propodeum with very fine alutaceous puncturation.

Gaster as long as thorax with terebra as long as gaster + 1/2 thorax.

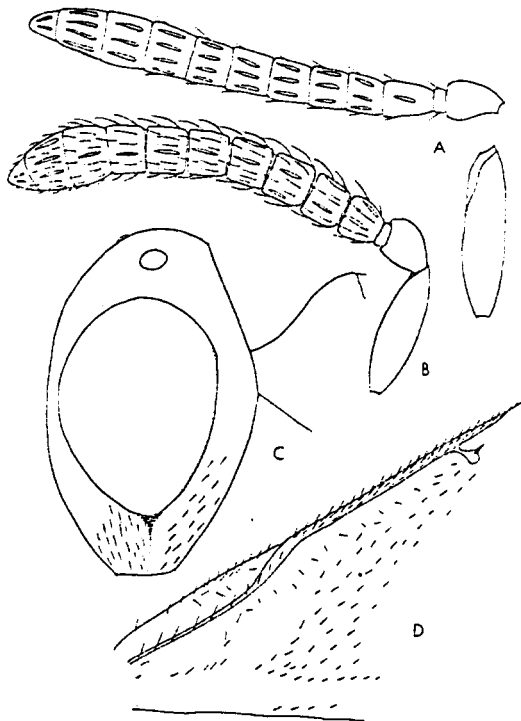


Fig. 1. *Torymus canariensis* n.sp. - A. Antenna ♀. - B. Antenna ♂. - C. Head in lateral view ♀. - D. Part of fore wing ♀.

Hind coxae bare, apart from a few hairs distally. Longest spur of hind tibia shorter than half basal tarsal joint.

Fore wing (fig. 1 D) with sparse hairs, basal cell closed below but speculum open below.

Length: 1.2-1.8 mm.

MALE. Similar to female but hind femora with tint of green and hind tibia sometimes darker brown. Gaster with a yellow lateral macula, which sometimes tends to form a band completely surrounding the gaster. Antenna (fig. 1 B).

Length: 1.2-1.7 mm.

Host: All specimens reared from a gall midge on *Artemisia canariensis*. The midge belongs to *Rhopalomyia* and is probably a n.sp.

Elachertus lasiodermæ n.sp. (Fig. 2)

Type locality: Canary Islands, Tenerife, Bailladero.

Type material: Holotype ♀. Canary Islands, Tenerife, Bailladero, 25 January 1977. leg. T.-E. Leiler, in coll. Hedqvist.

Paratypes: 19 ♀ 6 ♂ from same locality as holotype and in same collection.

Diagnosis: *E. lasiodermæ* n.sp. is similar to *E. geniculatus* (Hart.) but differs as follows. Scutellum

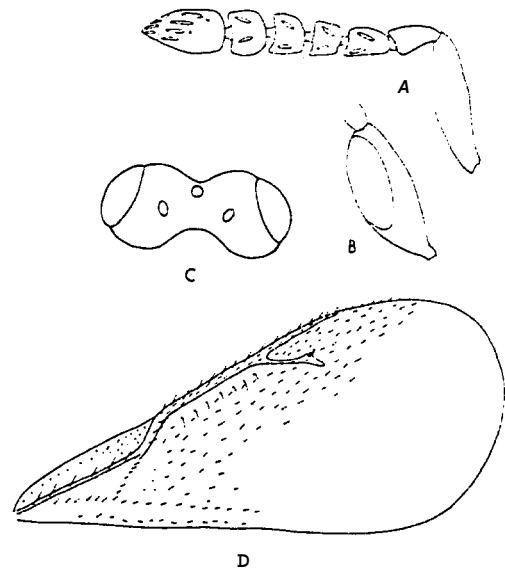


Fig. 2. *Elachertus lasiodermæ* n.sp. - A. Antenna ♀. - B. Antennal scapus ♂. - C. Head in dorsal view ♀. - D. Fore wing ♀.

is alutaceous as in mesoscutum. Marginal vein twice as long as stigmal vein (three times so in *E. geniculatus*). Scutellum as long as mesoscutum, in *E. geniculatus* the mesoscutum is as long as half scutellum.

Description

FEMALE. Black, with knees, tibiae, tarsi (except claw-joints) and trochanters testaceous. Gaster basally with a more or less distinct testaceous macula.

Head (fig. 2 C) with face shallowly concave, smooth. Inner orbits and vertex with alutaceous puncturation. POL twice OOL. Antennae (fig. 1 A) inserted just below a level with anterior margin of eyes. Malar space half length of an eye.

Thorax. Anterior part of prothorax strongly alutaceous - coriaceous, the rest of pronotum, mesoscutum, scutellum and scapulae alutaceous. Propodeum with a median carina. Prepectus large with a shallow concavity.

Gaster as long as thorax + propodeum.

Fore wing (fig. 2 D) with basal cell and speculum closed below, the latter small. Costal cell with a complete row of hairs. Marginal vein about twice as long as stigmal vein, postmarginal vein slightly longer than stigmal vein.

Length: 1.8-2.2 mm.

MALE similar to female but antennal scapus (fig. 2 B) thickened and with a smooth oval area. Tibiae brownish.

Length: 1.3-1.8 mm.

Host: The specimens were reared from a stem of thisle together with *Lasioderma tibiale* n.sp. (Israelson in litt.) (Col., Anobiidae).

References

ASKEW, R. R., 1968. Hymenoptera. 2 Chalcidoidea section (B) in Handbooks for the identification of British insects. 7. Part 2 (b): 1-39.
GRAHAM, M. W. R. DE V., 1959. Keys to the British

genera and species of Elachertinae, Eulophinae, Entedontinae and Euderinae (Hym., Chalcidoidea). - Trans. Soc. Br. Ent. 13: 169-204.
HOPFMEYER, E. B., 1930-1931. Beiträge zur Kenntnis der dänischen Callimomiden. mit Bestimmungstabellen der europäischen Arten (Hym. Chal.) (Callimomidenstudien 5). - Ent. Med. 17: 232-267.
PEREZ, J., 1895. Voyage de M. Ch. Alluaud aux îles Canaries (Novembre 1889-Juin 1892) Hyménoptères. - Ann. Soc. ent. Fr. 64: 191-204.

Antenna ♂
pal view ♀

1 vein twice
H. genicula-
ta genicula-
llum.

... (except
over basally
...
ve. smooth.
...
inserted just
eyes. Malae

... (staple-
...
... with
narrow con-

... speculum
... with a
... twice as
... longer

... scapus (fig.
... area. Tibiae